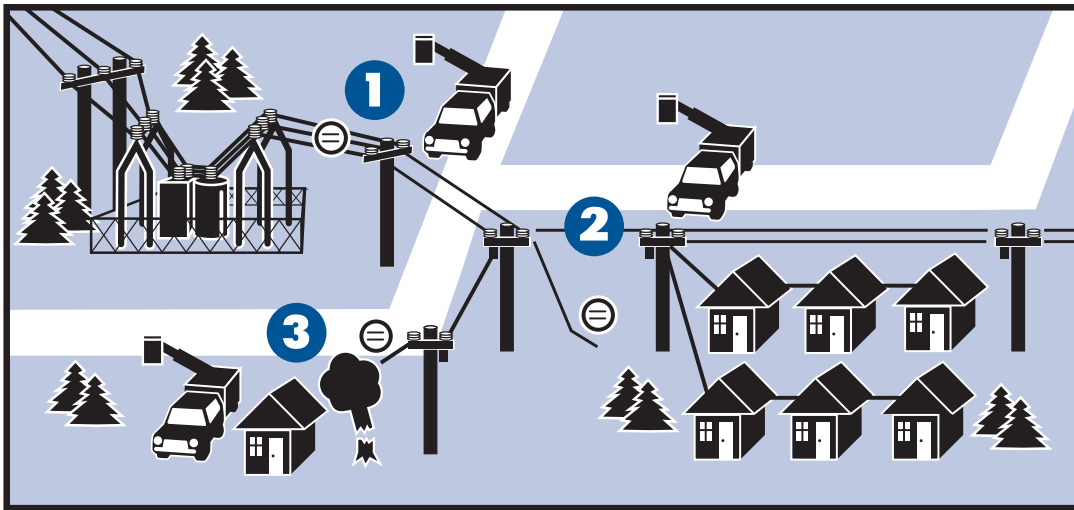


Be prepared

Getting you back on line



In any outage, the first priority is to get the greatest number of people back on line as quickly as possible. That's why electric co-ops follow a sequence of repairs that restores power to large groups of consumers before tackling smaller groups and individual consumers. This fictitious example details a typical repair sequence.

- 1** The main distribution line from the substation must be fixed before anyone can have power.
- 2** Next, repair crews fix the lines that bring power to the greatest number of people in a community.
- 3** After larger pockets of consumers are back on line, crews fix service lines to individual homes.